



**REPAIR PARTS LIST
FOR
90X3A77X
90X3D87X
POLAR MACH HEAT PUMPS**

WARRANTY INFORMATION

PARTS RETURN

“Air Conditioning” in-warranty parts subject to return to RV Products must be sent prepaid to the following address. Always include your company’s claim or workorder along with RVP’s invoice generated from the shipment of the replacement part.

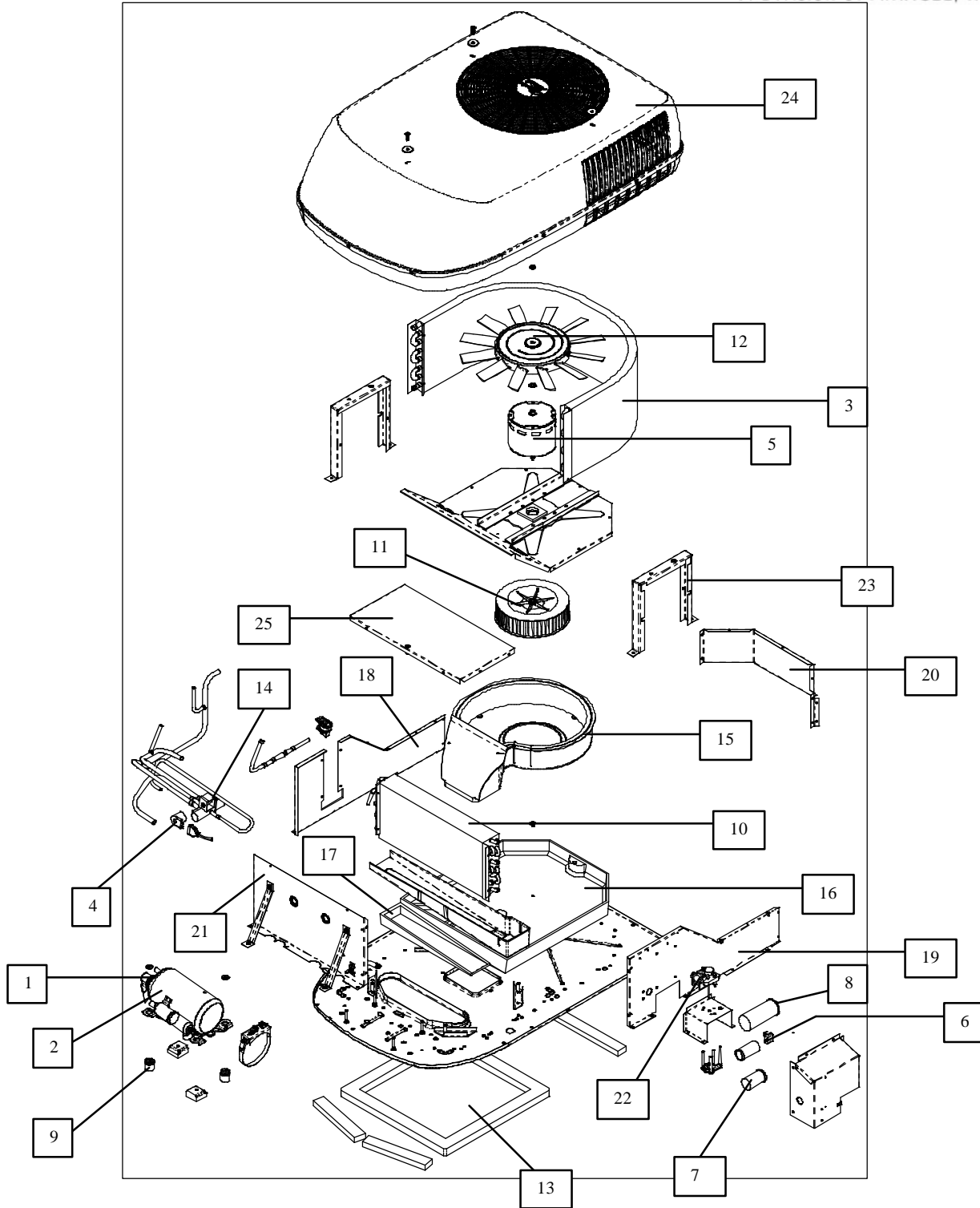
RV Products
A Division of Airxcel, Inc.
Attn: Warranty Return
3050 N. St. Francis
Wichita, KS 67219

WRITTEN CORRESPONDENCE

All written correspondence (no parts) should be sent to the following address:

RV Products
A Division of Airxcel, Inc.
Dept. 546
P.O. Box 4020
Wichita, KS 67204

90X3A77X
90X3D87X





90X3A77X
90X3D87X

CODE	USED ON MODEL	PART NUMBER	DESCRIPTION	NO. REQ
1.	77X	1450-0181	Overload	1
	87X	1450-0131	Overload	1
2.	77X	1450-2399	Compressor (Sanyo)	1
	87X	1450A2189	Compressor (Tecumseh)	1
3.	All	1452-1241	Condenser Coil	1
4.	All	1460-1081	Solenoid Coil	1
5.	All	1468B3239	Motor	1
6.	All	9333-9021	Start Device Pkg.	1
7.	All	1499-5461	Fan Capacitor (7.5 Mfd/370V)	1
8.	77X	1499-5731	Run Capacitor (45 Mfd/370V)	1
	87X	1499-5721	Run Capacitor (40 Mfd/370V)	1
9.	All	1450-9811	Compressor Grommet Pkg.	1
10.	All	1452-1261	Evaporator Coil	1
11.	All	1472A1181	Blower Wheel	1
12.	All	1472-5021	Fan Blade	1
13.	All	8332-3301	Gasket Pkg.	1
14.	77X	9033-540	Reversing Valve Assembly	1
	87X	9032A5301	Reversing Valve Assembly	1
15.	All	9233B316	Blower Scroll	1
16.	All	9233B325	Blower Tray	1
17.	9223/9233	9233-350	Drain Pan	1
	9203/9213	9233-150	Drain Pan	1
18.	All	9233-602	Right Side Panel Assembly	1
19.	All	9233A603	Left Side Panel Assembly	1
20.	All	9233-604	Back Panel Assembly	1
21.	All	9233F607	Front Panel	1
22.	9023/9033	9233-5091	Condensate Pump Assembly	1
23.	All	9233A506	Side Brace Assembly	1
24.	776/876	9203-5261	Shroud	1
	779/879	9203-5291	Shroud	1
ns	All	9032A5061	Freeze Switch Assembly	1
ns	All	6792-5111	Screw/Washer Pkg.	1
25.	All	9233-622	Evaporator Cover	1
ns	All	9032B375	Conduit Assembly	1

SPECIAL ORDER PARTS:

NOTE: All parts with three digit suffix numbers are "Special Order" Parts. These parts are subject to factory availability and require extra time for delivery.