



# **REPAIR PARTS LIST FOR 8533 “D” SERIES MARINE**

---

## **WARRANTY INFORMATION**

### **PARTS RETURN**

“Air Conditioning” in-warranty parts subject to return to RV Products must be sent prepaid to the following address. Always include your company’s claim or workorder along with RVP’s invoice generated from the shipment of the replacement part.

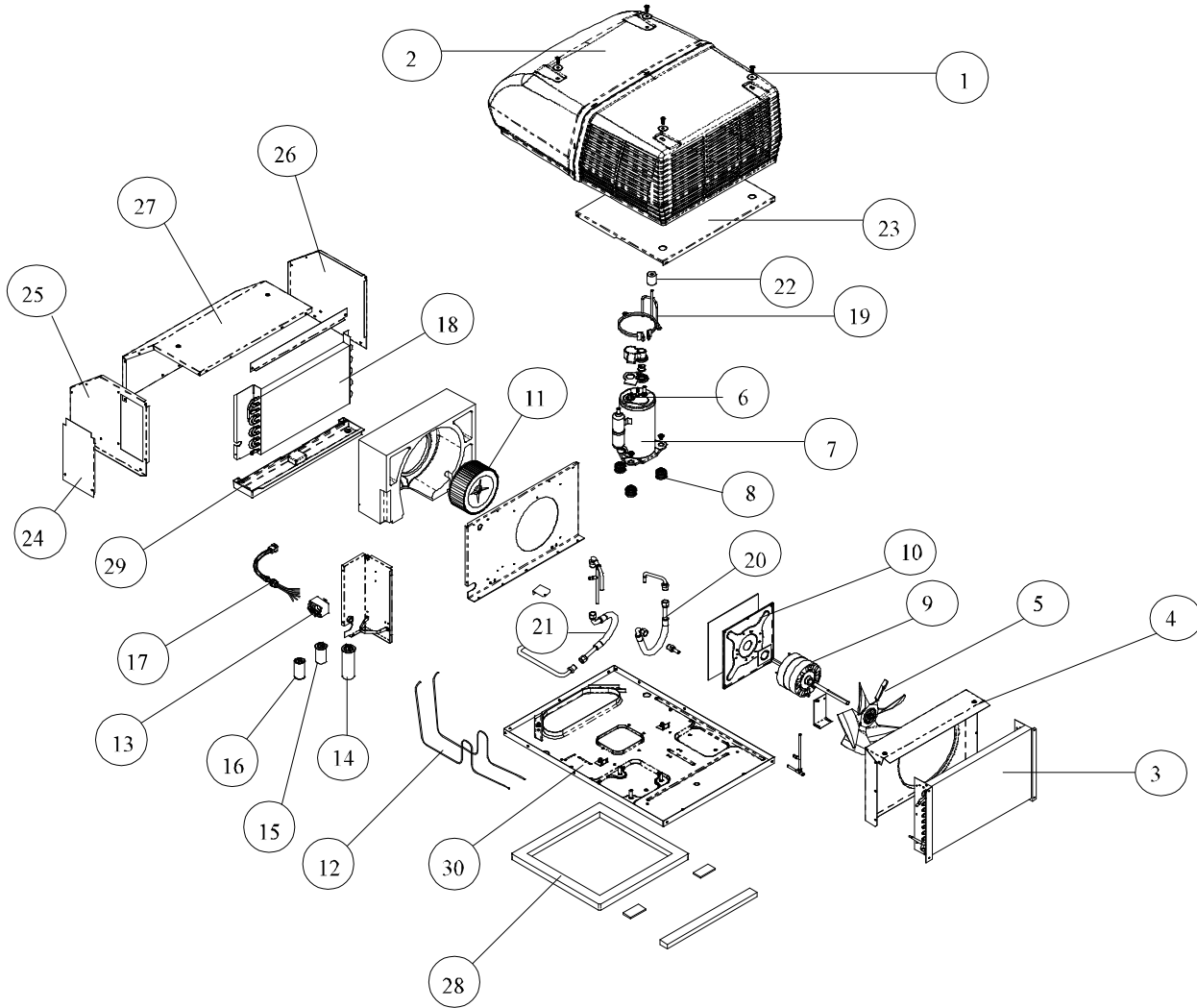
RV Products  
A Division of Airxcel, Inc.  
Attn: Warranty Return  
3050 N. St. Francis  
Wichita, KS 67219

### **WRITTEN CORRESPONDENCE**

All written correspondence (no parts) should be sent to the following address:

RV Products  
A Division of Airxcel, Inc.  
Dept. 546  
P.O. Box 4020  
Wichita, KS 67204

# 8533 "D" SERIES





## 8533 “D” SERIES

CODE	USED ON MODELS	PART NUMBER	DESCRIPTION	NO. REQ.
1.	All	6792-5111	Screw Nut & Washer (4 Pkg.)	1
2.	All	8335-5261	Shroud (Arctic White/Arctic White)	1
3.	All	1452-1391	Condenser Coil	1
4.	All	7533-3071	Fan Shroud	1
5.	All	6733-3221	Fan (6 Blade, 11 Dia., 40 Degree Pitch, .50 Dia. Bore)	1
6.	896	6759-3791	Overload	1
	796	1450-0181	Overload	1
7.	896	1450-2079	Compressor (Tecumseh-AK157AT-025-A2)	1
	796	1450-2329	Compressor (Sanyo)	1
8.	All	6759-3081	Compressor Mounting Pkg. (3 Pkg.)	1
9.	All	1468-3179	Motor (115V, 60 HZ)	1
10.	All	8333-5151	Mount & Seal Kit	1
11.	All	1472-1091	Impellor	1
12.	All	7473-1351	Cap Tube (Formed)	1
13.	All	1497-4131	Start Relay	1
14.	896	1499-5661	Run Capacitor (25 Mfd/370V)	1
	796	1499-5731	Run Capacitor (45 Mfd/370V)	1
15.	896	1497-1081	Start Capacitor (108-130 Mfd/165V)	1
	796	1497-0871	Start Capacitor (88-108 Mfd/165V)	1
16.	All	1499-5461	Fan Capacitor (7.5 Mfd/370V)	1
17.	All	8333B3751	Conduit & Wiring	1
18.	All	1452A155	Evaporator Coil	1
19.	All	7473A301	Compressor Stabilizer	1
20.	All	8473-3021	Flexible Refrigeration Hose	1
21.	All	8473-3021	Flexible Refrigeration Hose	1
22.	All	6770-3011	Compressor Snubber	1
23.	896	7473A108	Top Brace	1
	796	8533-325	Top Brace	1
24.	All	8333-109	Wirebox Door	1
25.	All	8333-104	Side Panel Left With Insulation	1
26.	All	8333-105	Side Panel Right With Insulation	1
27.	All	8533-5061	Evaporator Cover Assy. With Insulation	1
28.	All	8332-3301	Gasket Pkg.	1
29.	All	8335-3501	Drain Pan	1
30.	All	8433-501	Basepan Assembly	1
ns	All	8333B1551	Shroud Bracket	3
ns	All	8335A3841	Filler Pad Condenser Air Seal	1

**SPECIAL ORDER PARTS:**

**NOTE: All parts with three digit suffix numbers are “Special Order” Parts. These parts are subject to factory availability and require extra time for delivery.**