



# **REPAIR PARTS LIST FOR 8535D87X SERIES HEAT PUMP WITH TECUMSEH COMPRESSOR**

---

## **WARRANTY INFORMATION**

### **PARTS RETURN**

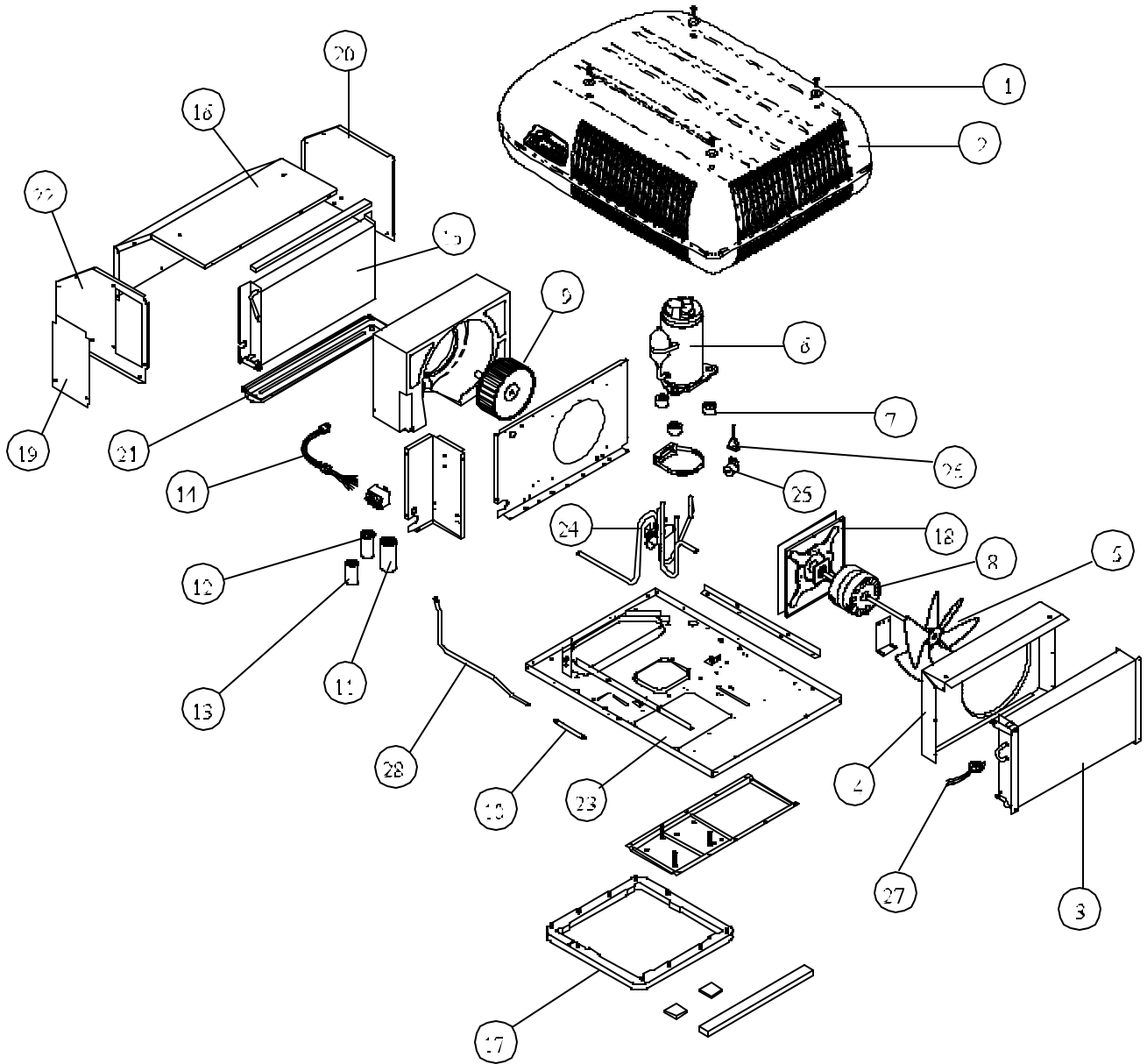
“Air Conditioning” in-warranty parts subject to return to RV Products must be sent prepaid to the following address. Always include your company’s claim or workorder along with RVP’s invoice generated from the shipment of the replacement part.

RV Products  
A Division of Airxcel, Inc.  
Attn: Warranty Return  
3050 N. St. Francis  
Wichita, KS 67219

### **WRITTEN CORRESPONDENCE**

All written correspondence (no parts) should be sent to the following address:

RV Products  
A Division of Airxcel, Inc.  
Dept. 546  
P.O. Box 4020  
Wichita, KS 67204



# 8535D87X SERIES



CODE	USED ON MODELS	PART NUMBER	DESCRIPTION	NO. REQ.
1.	All	6792-5111	Screw Nut & Washer (4 Pkg.)	1
2.	All	8335-5261	Shroud (Arctic White/Arctic White)	1
	All	8335-5291	Shroud (Black)	1
3.	All	1452-1441	Condenser Coil	1
4.	All	7535-1071	Fan Shroud	1
5.	All	6733-3221	Fan (4 Blade, 11 Dia., 40 Degree Pitch, .50 Dia. Bore)	1
6.	All	1450B2299	Compressor	1
7.	All	6759-3081	Compressor Mounting Pkg. (3 Pkg.)	1
8.	All	1468-3069	Motor (115V, 60 HZ)	1
9.	All	1472-1091	Impellor	1
10.	All	1454-260	By-Flow Restrictor	1
11.	All	1499-5731	Run Capacitor (45Mfd)	1
12.	All	1499-5461	Fan Capacitor (7.5 Mfd/370V)	1
13.	All	8333A9021	Start Device Pkg.	1
14.	All	8535B375	Conduit & Wiring Assembly	1
15.	All	1452-1521	Evaporator Coil	1
16.	All	8333A5061	Evaporator Cover Assy. With Insulation	1
ns	All	8335A3841	Filler Pad - Condenser Air Seal	1
17.	All	8332-3301	Gasket Pkg.	1
18.	All	8333-5151	Motor Mount & Shaft Seal Kit	1
19.	All	8333-109	Wirebox Door	1
20.	All	8333-505	Side Panel Rt. With Insulation	1
21.	All	8333-1501	Drain Pan Assy.	1
22.	All	8333-507	Side Panel Lt. With Insulation	1
23.	All	8333B1011	Basepan	1
24.	All	8535-540	Reversing Valve Assembly	1
25.	All	1460-1081	Solenoid Coil	1
26.	All	1460A109	Solenoid Harness Assembly	1
27.	All	1460A2041	Freeze Switch	1
28.	All	7535-135	Liquid Line	1
ns	All	8333B1551	Shroud Bracket	3
ns	All	6759-3791	Overload	1

## SPECIAL ORDER PARTS:

**NOTE:** All parts with three digit suffix numbers are "Special Order" Parts. These parts are subject to factory availability and require extra time for delivery.