

*Coleman-Mach*

# POLAR MACH 15™

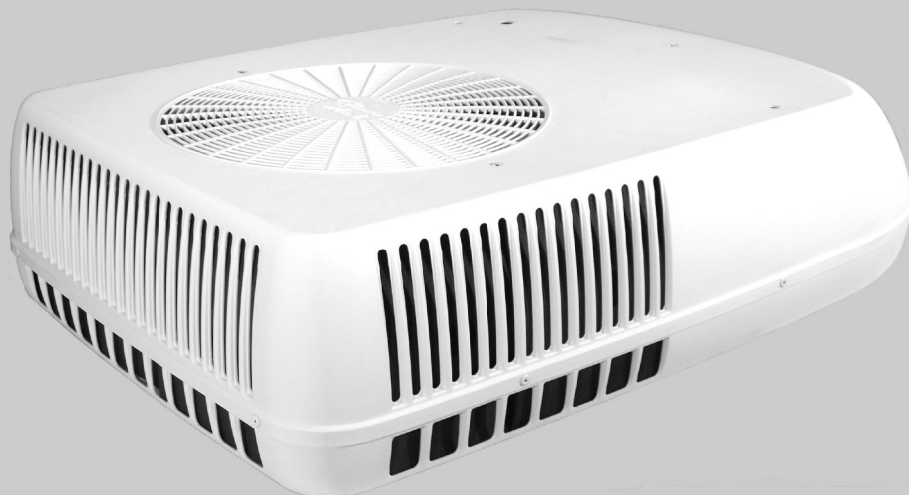
**RV AIR CONDITIONER**

Now charged with (eco-friendly) R-410A



The quality line of Coleman®-Mach® RV Air Conditioners now includes a revolutionary new low-profile series utilizing the latest air conditioner technology. As environmental chamber testing has documented, the new, low-profile Polar Series offers the best cooling capacity versus power consumption ever supplied to the recreational vehicle industry!

New aerodynamically styled air conditioner shrouds include weather-resistant condenser coil protection, while exclusive optional 100% condensate water removal allows consumers to avoid vehicle discoloration problems. Heat transfer to the vehicle exterior has been dramatically accelerated by our new vertically mounted motor and 17" oversized fan blade.



*Coleman-Mach*

# POLAR MACH 15™

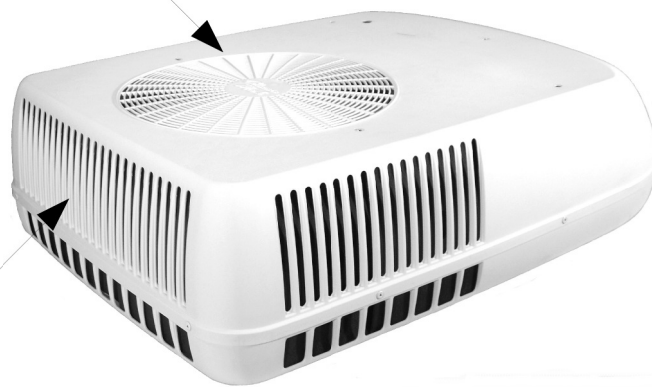
**RV AIR CONDITIONER**

**Now charged with (eco-friendly) R-410A**

## Polar Mach 15™ RV AC Specifications – 49204 Series

Nominal BTU Cooling Capacity	15,000
Locked Rotor Cooling Amps	63
Running Watts/Cooling <sup>1</sup>	1,650
Running Watts/Cooling <sup>2</sup>	2,050
Running Watts/Heating <sup>3</sup>	1,800
Electrical Rating	115V 60Hz 1Phase
Delivered BTU Heating Output*	5,600
Approximate Full-Load Amps/Cooling	15.9
Approximate Full-Load Amps/Heating*	16.4
Evaporator Air Delivery CFM	310
Unit Weight (lbs.)**	95

Large 17" fan moves more air over the oversized coil.



Low profile for better aerodynamics.

Hail guard shroud protects the coil.

- High performance... a quiet rotary compressor is the heart of the A/C refrigeration system.
- Motor and air discharge fan have been matched to provide maximum air delivery (CFM).
- Refrigeration circuit tubing has been rifled and cross-hatched internally to create turbulence in the refrigerant, improving the system's ability to dissipate heat.
- Optional solar energy panel for 12vdc battery maintenance.
- Optional Heater Assembly can be added to provide a source of warm air.
- Plastic drain pan eliminates corrosion.
- The condensate water collection pan is constructed of high-density polyethylene to eliminate any possible corrosion.
- Electrical compressor-starting components are standard equipment.
- At 1/3 hp, the motor is the most powerful in the RV industry and features a fan canopy to protect against damage from the elements.
- Optional heater assembly can be added to provide 5,600 BTUs of warm, chill-chasing heat.
- Corrosion-resistant, stainless steel truss head screws secure the shroud.

\*Optional Heater Assembly

\*\*Installed weight will vary with Ceiling Package option

<sup>1</sup>Tested under the following conditions: Cooling A.R.I. Standard Conditioning 80° F.DB/67° F.WB Indoor, 95° F.DB Outdoor at 115VAC

<sup>2</sup>Tested under the following conditions: Cooling A.R.I. Standard Conditioning 95° F.DB/71° F.WB Indoor, 115° F.DB Outdoor at 103.5VAC

<sup>3</sup>Tested under the following conditions: 47° F. Outdoor Temperature.

Important: It is not the policy of RV Products to size generators for application in recreational vehicles. However, when sizing generators, the electrical power consumption in watts for the entire vehicle must be determined and taken into consideration. RV Products tests all units in accordance with A.R.I. Standard 210.

Coleman is a registered trademark of The Coleman Company, Inc. ©2003, RV Products, a Division of Airxcel, Inc. Form 101-0603

  
RV Products Division  
[www.rvcomfort.com](http://www.rvcomfort.com)