

*Coleman-Mach*  
**POLAR MACH 15™**  
**R V H E A T P U M P**

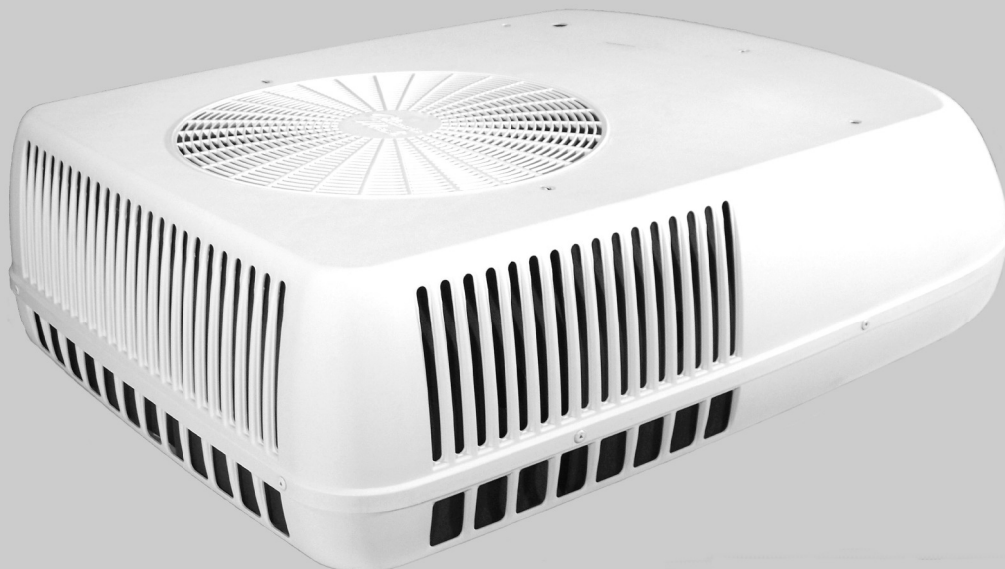
Now charged with (eco-friendly) R-410A



With the Coleman®-Mach® Polar Mach™ RV Heat Pump, you get a high performance air conditioner and an economical, electric source of heat in one sleek package.

When it cools, the Polar Series offers the best cooling capacity versus power consumption we have ever supplied to the recreation vehicle industry, according to environmental chamber testing. Heat transfer to the vehicle exterior has been dramatically accelerated by our new vertically mounted motor and 17" oversized fan blade, while an optional condensate pump will remove 100% of the condensation in the cool mode operation.

When a chill is in the air, a special reversing valve enables the cooling system to convert to a heating system. In fact, the Polar Mach™ Heat Pump provides 30% more heating capacity - at half the power consumption - compared to a conventional electric heat element - only system.



 **AIRXCEL**  
RV Products Division  
[www.rvcomfort.com](http://www.rvcomfort.com)

*Coleman-Mach*

# POLAR MACH 15™

R V H E A T P U M P

Now charged with (eco-friendly) R-410A

## Polar Mach 15™ RV Heat Pump Specifications – 49004 Series

Nominal BTU Capacity	15,000
Locked Rotor Amps	63
Running Watts/Cooling <sup>1</sup>	1,650
Running Watts/Cooling <sup>2</sup>	1,950
Running Watts/Heating <sup>3</sup>	1,800
Electrical Rating	115V 60Hz 1Phase
Delivered BTU Heating Output <sup>3</sup>	5,600
Approximate Full-Load Amps/Cooling	15.9
Approximate Full-Load Amps/Heating <sup>3</sup>	16.4
Evaporator Air Delivery CFM (high speed)	310
Unit Weight (lbs.)(approximate)	100

Large 17" fan moves more air over the oversized coil.

Low profile for better aerodynamics.

Hail guard shroud protects the coil.



- High performance... a quiet rotary compressor is the heart of the A/C refrigeration system.
- Motor and air discharge fan have been matched to provide maximum air delivery (CFM).
- Refrigeration circuit tubing has been rifled and cross-hatched internally to create turbulence in the refrigerant, improving the system's ability to dissipate heat.
- You can set the thermostat for your Polar Mach™ RV Heat Pump to either electric or gas heat. On the electric setting, the Polar Mach™ Heat Pump will be your heat source as long as the interior temperature of the RV has not dropped 5 degrees below thermostat set point. If this occurs, the thermostat will automatically activate your gas furnace. The furnace will continue as the heat source until the thermostat set point has been satisfied. At that point, the heat pump will again become the primary heat source.
- In Heat Pump mode, the compressor will shut down between 40°F and 45°F due to lack of heat in the outside air.
- The condensate water collection pan is constructed of high-density polyethylene to eliminate any possible corrosion.
- Electrical compressor-starting components are standard equipment.
- At 1/3 hp, the motor is the most powerful in the RV industry and features a fan canopy to protect against damage from the elements.
- Optional heater assembly can be added to provide 5,600 BTUs of back-up heat for when outside temperatures are too cold for effective heat pump operation.
- Corrosion-resistant, stainless steel truss head screws secure the shroud.
- Optional solar energy panel for 12vdc battery maintenance.
- Optional Heater Assembly can be added to provide a source of warm air.
- Plastic drain pan eliminates corrosion.

<sup>1</sup> Tested under the following conditions: Cooling A.R.I. Standard Conditioning 80° F.DB/67° F.WB Indoor, 95° F.DB Outdoor at 115VAC

<sup>2</sup> Tested under the following conditions: Cooling A.R.I. Standard Conditioning 100° F.DB/72° F.WB Indoor, 120° F.DB Outdoor at 103.5VAC

<sup>3</sup> In Heating Element mode of operation.

Important: It is not the policy of RV Products to size generators for application in recreational vehicles. However, when sizing generators, the electrical power consumption in watts for the entire vehicle must be determined and taken into consideration. RV Products tests all units in accordance with A.R.I. Standard 210.

  
RV Products Division  
[www.rvcomfort.com](http://www.rvcomfort.com)